



www.santee.org

P.O. Box 548
Kingstree, SC 29556
(843) 355-6187
(800) 922-1604

Georgetown (843) 546-4521

Lake City (843) 374-3000

Hemingway (843) 558-3313

Manning (803) 473-4036

TO REPORT AN OUTAGE
1-888-239-2300

Robert G. Ardis III
President & CEO

TRUSTEES

Billy L. Morris, Jr.,
Chairman, District 6
Allen Nesmith,
Vice Chairman, District 4
Bill Floyd,
Second Vice Chairman, District 8
Stanley S. Pasley,
Secretary/Treasurer, District 7
Donald E. Coker,
Assistant Secretary/Treasurer, District 3
Andy D. McKnight, *District 5*
Dudley Musier, *District 2*
Walter L. Sanders, *District 1*
Harry Walters, *District 9*

**SANTÉE ELECTRIC
COOPERATIVE NEWS**
Joanna Arnsmeier, *Editor*
jarnsmeyer@santee.org

FIND US ON



A Touchstone Energy® Cooperative

A small gift to you



LADIES AND GENTLEMEN, I am very excited about this month's issue! This is our annual holiday double issue, and we have four extra pages here for you this month, a small gift to you as a token of our appreciation for our member-owners. Enjoy!

Since the holidays mark the onset of colder temperatures, I want to make a couple of points regarding winter power bills. First, it is true that power bills are usually highest in the winter. This is not, however, because your cooperative raises rates in the winter. We do not. Power bills are higher in the winter because people use more electricity heating their homes. Furthermore, though Christmas lights do use electricity, the amount is tiny compared to the additional load on your HVAC system. Feel free to show your Christmas spirit this year. A 1-degree change in your thermostat makes a bigger difference on your power bill than your Christmas lights do. Finally on this subject, Joanna, our new editor, has included some great energy savings tips for you.

We also have a couple of pages in this month's issue dedicated to Santee Electric's economic development efforts in our four counties. This has long been a passion of mine for several reasons. First, it is exciting to be part of "landing" one of these industries. They bring jobs, investment, tax revenue for infrastructure and an overall better quality of life for our communities. Beyond that, though, SEC is particularly interested in these customers because they buy power when power is cheap—in the middle of

the day and the middle of the night. This off-peak buying helps us manage our costs and YOUR rates. Ronald, our economic development director, has a great article for you!

We even have an ad in here for our SmartHub app. If you are not using SmartHub, you are missing out! First, it's free. Second, it can save you money. SmartHub can show you exactly when you are using electricity, and that makes you more aware of what appliances are costing you the most. Also, it can save you time and money that you normally spend on gas and stamps. Why mail in your payment when you can click a button and send the payment? Why drive to the office and wait in line when you can do it all from your cell phone? Check out SmartHub. Everyone who uses it loves it!

Last, but certainly not least, we have a feature on recent charitable giving. Your cooperative and Operation Round Up have partnered to give significant amounts of money to very worthy local charities. Furthermore, one of Santee Electric's lenders has matched some of this money to double the impact. Please consider participating in Operation Round Up if you do not already. In this season of giving, I want you to know your cooperative is doing its part. I wish you all a Happy Thanksgiving, a Merry Christmas and a Happy New Year! I look forward to talking to you again in 2022!

ROBERT G. ARDIS III
President and Chief Executive Officer



▲ Turbeville Children's Home received \$10,000 from SEC. Pictured from left are Lee Davis, Round Up Trust board member; Otis Franklin, Round Up Trust board member; Jay Kirby, SEC vice president of public affairs; Charlena Cooper, Round Up Trust board member; Rebecca Powell; Becky Jones; Rob Ardis, SEC president and CEO; Angela Johnson, Round Up Trust board member; and Tim Moore, director, Turbeville Children's Home.

Donations benefit foundations

Santee Electric Cooperative was proud to make sizeable donations to three charitable foundations—Turbeville Children's Home, Caring and Sharing Inc. and the Francis Marion University Education Foundation—through the cooperative's Round Up Fund and CoBank's Sharing Success program.

CoBank is a national cooperative bank with a Sharing Success program, a fund that matches the contributions from Santee Electric to the charities. Santee Electric has participated in the Sharing Success program for the past ten years.

"CoBank has been an extremely valuable lending partner of Santee Electric's for many years, and the Sharing Success program they offer is one of the great benefits that they provide," says Jay Kirby, vice president of public affairs. "It helps us to give back to the charities that work hard in our communities."

The Round Up Fund is supported by SEC's Operation Round Up program. Each month, Santee Electric "rounds up" the electric bills of participating members to the next highest dollar. All Operation Round Up donations are placed in trust and administered by an independent Board of Directors, the Santee Electric Trust.

If you participate in Operation Round Up then you played a huge role in these donations!

Turbeville Children's Home, a foster childcare facility, received \$10,000 from SEC through the Round Up fund and CoBank's Sharing Success Program. In February 2016, the first children were placed in the reopened Turbeville Children's Home and since then Turbeville Children's Home has cared for over 250 children between the ages of 7 and 20 from all 48 counties across South Carolina. The money provided will go towards upgrading the restroom facilities.

"We are so grateful for this donation. Making differences in the lives of the kids is the ultimate goal. Through generous donations like this one, we can," says Tim Moore, director of Turbeville Children's Home.



▲ The Francis Marion University Education Foundation received \$2,500 for its First Generation Fund. Pictured from left are Ronald Carter, manager, SEC economic development and government relations; Charlena Cooper, Round Up Trust board member; Rob Ardis, SEC president and CEO; Dr. Fred Carter, president, Francis Marion University; Angela Johnson, Round Up Trust board member; and Jay Kirby, SEC vice president of public affairs.



▲ Caring and Sharing will use the \$5,000 donation from SEC to help disabled and senior citizens who are lacking basic needs. Pictured from left are Becky Jones, Round Up Trust board member; Jay Kirby, SEC vice president of public affairs; Charlena Cooper, Round Up Trust board member; Carl Harmon, director, Caring and Sharing; Lee Davis, Round Up Trust board member; Otis Franklin, Round Up Trust board member; Angela Johnson, Round Up Trust board member; and Rob Ardis, SEC president and CEO.

Caring and Sharing received \$5,000 from SEC. Caring and Sharing began with the vision to help people who were lacking basic needs. Caring and Sharing helps provide food through food banks and other means. The organization serves over 2,800 people, gives over 450,000 pounds of food each year and helps disabled and senior citizens with heating, water and electric bills, along with other necessities such as medicine.

The Francis Marion University Education Foundation received \$2,500 for the First Generation Fund, which provides scholarships to individuals who are the first in their family to attend college. The FMU Education Foundation's primary focus has been on scholarship support for students.

Santee Electric is happy to have the opportunity to give back to these great organizations that do so much in our communities.

Trim your energy costs this holiday

WITH THE HOLIDAYS right around the corner, Santee Electric wants to share some helpful tips for how to save energy this holiday season. Electric bills can increase during this time of the year for a variety of reasons, from holiday gatherings to shorter days and longer nights. Here are 10 tips to help you save energy this holiday season:

1. Set your thermostat to 68 degrees or cooler to give your heating system a break.
2. Replace your HVAC filters regularly. Check filters monthly to make sure they're not too dirty.
3. Open blinds and other window coverings to let natural light in to warm your home.
4. Wash your clothes in cold water.
5. Clean oven burners regularly.
6. Match the pan size to the burner you are using.
7. Use small appliances like slow cookers and toaster ovens when possible.
8. Unplug your small kitchen appliances when they are not in use.
9. If you are going out of town, unplug electronics that still use energy such as TVs, gaming consoles and chargers.
10. Choose LED lights. LED holiday lights use less energy and can last up to 40 seasons. Another bonus of LED lights is that they are easier to install. You can connect more LED lights than traditional Christmas lights without overloading the wall socket.

Bonus Tip: One of the best ways you can save energy and stay warm is to caulk and weatherstrip areas that typically need sealing. Sealing around windows and doors, plumbing, duct work and areas where electrical wiring comes through the walls, floors and ceilings will help keep the cold air out and your electric bill low.

Lighting Your Way This *Holiday Season*

At Santee Electric Cooperative, we want our members to always know that we are here not only to bring light, but to bring warmth, safety and dependable service to you and your loved ones now—and throughout the coming year.

*Merry Christmas and
Wishing You a Bright New Year!*



A Touchstone Energy® Cooperative

(800) 922-1604
santee.org



Santee Electric will be closed for the holidays Nov. 25–26, Dec. 23–24 and Dec. 31.

Aligning economic development

Santee Electric is working to encourage economic development in its service territory

BY: RONALD CARTER, MANAGER, ECONOMIC DEVELOPMENT AND GOVERNMENT RELATIONS

THE TERM “ECONOMIC DEVELOPMENT” has been misused on many occasions to describe projects that are promoted as being for the public good. Some people think of infrastructure projects and government spending when they hear “economic development.” Some think of job creation. Others think of factories and other major capital investment projects. All of these are elements; but without coordination, they are just a grocery list of projects.

Your cooperative has supported economic development activities and organizations for 81 years. Much of that support was traditionally limited to building electrical infrastructure and providing donations to economic development groups. From there, things just kind of worked out. Things are different now. The competitive environment is faster paced and tougher than ever. British novelist L.P. Hartley wrote, “The past is a foreign country; they do things differently there.” With

thousands of communities competing for economic development investments, the only way to bring attention to our area is to have all of the elements of economic development aligned.

First, SEC has taken a more active role in the identification and development of industrial parks and buildings, investing time and financial resources and coordinating with county governments. We are making sure that our financial resources are invested and leveraged for greater purposes. If we can turn one SEC dollar into three dollars, much can be accomplished.

Second, SEC has been increasing its messaging to ensure that the right groups are aware of what we can offer new and expanding companies. Concern for Community is one of the cooperative governing principles. Taking an active role in the identification, recruitment and incentivization of prospective industries that create jobs for our members sends a strong message. This will benefit the counties through increased tax bases and will help our members with new or better job opportunities. Another reason that your cooperative supports

SEC supports development of four industrial parks

Santee Electric has partnered with Clarendon, Florence, Georgetown and Williamsburg counties to develop four industrial parks within its territory:

1. Scranton Industrial Park (Florence County) Through a partnership with Florence County and NESA, a regional economic development group, SEC and its statewide economic development group, the SC Power Team, have invested in developing the 150-acre Scranton Industrial Park. This Class A industrial park will feature two 100,000-square-foot building pads and an onsite SEC substation.



2. Williamsburg County Co-op Commerce Center SEC has a substation, Community Solar field and major infrastructure in the Williamsburg Cooperative Commerce Center.

Williamsburg County recently sold its 50,000 square foot spec building and needs a replacement. SEC has submitted an offer to assist them.

3. Clarendon County Industrial Park SEC is partnering with Clarendon County to construct a new 50,000 square foot industrial speculative building in Manning. The Clarendon County Industrial Park has been one of the most successful parks on our system but currently lacks an available spec building.

4. Georgetown County Business Center SEC is working with Georgetown County to promote the Georgetown County Business Center and will invest in updating engineering due diligence on the property. Additionally, SEC is working with Georgetown County to develop the Pennyroyal Industrial Park (not shown on map), a unique asset that will bring major opportunities to the area.

economic development is that the customers we pursue in those efforts buy as much power when costs are low as they do during peak periods, when costs are highest. That helps us keep our overall cost of power—and your rates—as low as possible.

Lastly, we are strengthening relationships with allies that can help us move toward our goals. Relationships with county administrators, economic development directors, regional alliances like NESAs and Central SC and the South Carolina Power Team have been key in helping SEC with its goals. SEC also has seats on our counties' economic development boards to be more involved and up to date. We are getting more directly involved in all elements of economic development.

Before we wrap this subject up, we want to be clear that we are doing all of this without impacting the price that you pay for electric service.



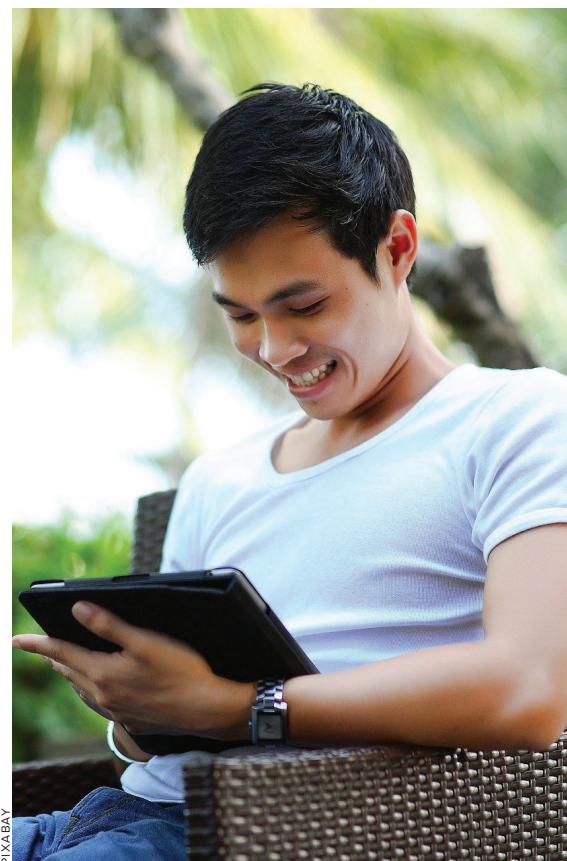
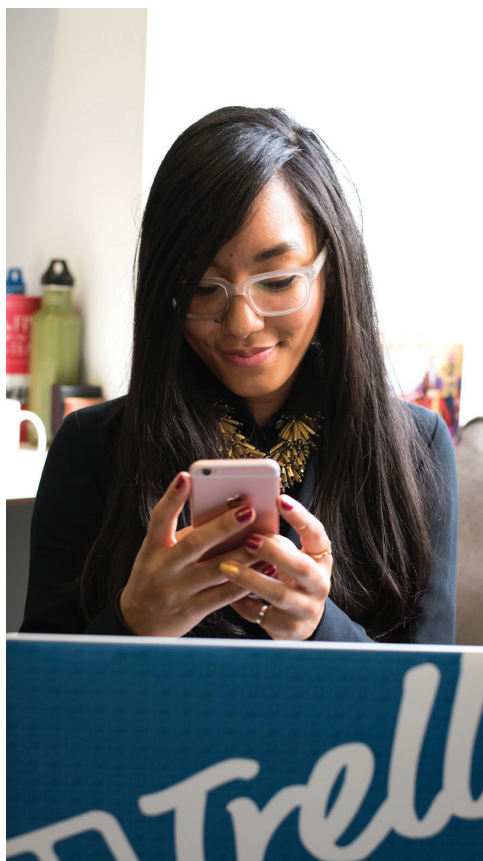
Ronald Carter, manager of economic development and government relations at SEC (right), joins Jamie Frost, senior vice president of community preparedness at the South Carolina Power Team, for a visit to one of the construction sites in SEC territory. The strong partnership between SEC and the Power Team has made many of these projects possible.

JOANNA ARNSMEYER



THOMAS & HUTTON

The master planned Class A Scranton Industrial Park in Florence County includes two 100,000-square-foot building pads, railroad access, a regional stormwater system and an on-site electrical substation. The master plan allows for more than 1 million square feet of building area, parking and truck courts, which could support up to 1,000 jobs.



*At home, at work, or at play— your account
is at your fingertips with Santee Electric's*

SMARTHUB APP

Install the SmartHub app from the App Store or Google Play. For your convenience, SmartHub can be used on mobile devices and personal computers.



A Touchstone Energy® Cooperative 

(800) 922-1604 • santee.org

